

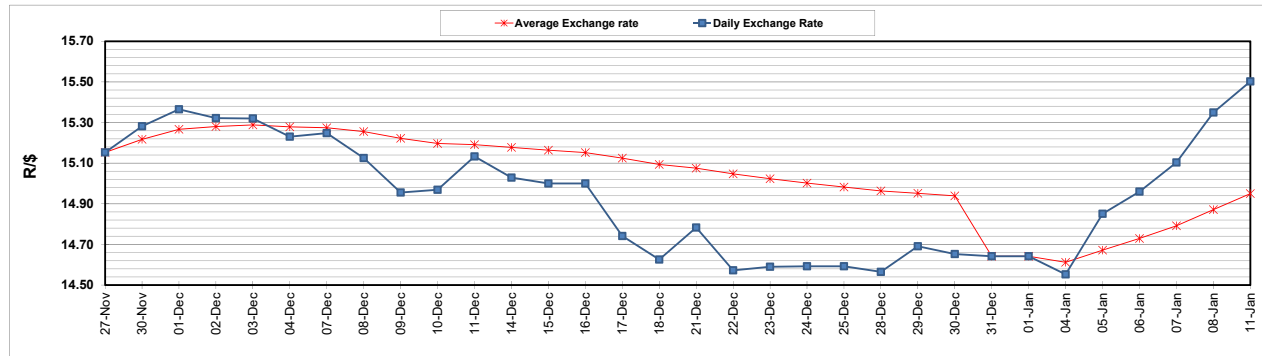
	PETROL 95 ULP	PETROL 93 ULP & LRP	DIESEL 0.05%	DIESEL 0.005%	ILL. PAR.
GAUTENG PUMP PRICE (SA c/l) AS FROM 06/01/2021	1,486.000	1,469.000	-	-	-
WHOLESALE PRICE (SA c/l) AS FROM 06/01/2021	-	-	1,300.420	1,301.820	739.688
SINGLE NATIONAL MAXIMUM RETAIL PRICE	-	-	-	-	930.000
BASIC FUEL PRICE - 11/01/2021 (SA c/l)	615.816	607.284	609.336	611.212	597.109
PRESS RELEASE CONTRIBUTION TO BFP 06/01/2021 - 11/01/2021 (SA c/l)	519.170	512.170	541.630	543.030	527.128
UNIT OVER/(UNDER) RECOVERY - 11/01/2021 (SA c/l)	(96.646)	(95.114)	(67.706)	(68.182)	(69.981)
AVERAGE BASIC FUEL PRICE 31/12/2020 - 11/01/2021	569.215	562.676	568.966	571.161	557.127
AVERAGE UNIT OVER/(UNDER) RECOVERY 31/12/2020 - 11/01/2021	(70.045)	(72.006)	(54.836)	(55.131)	(57.499)

### ANALYSIS MOVEMENT OF AVERAGE OVER/(UNDER) RECOVERY

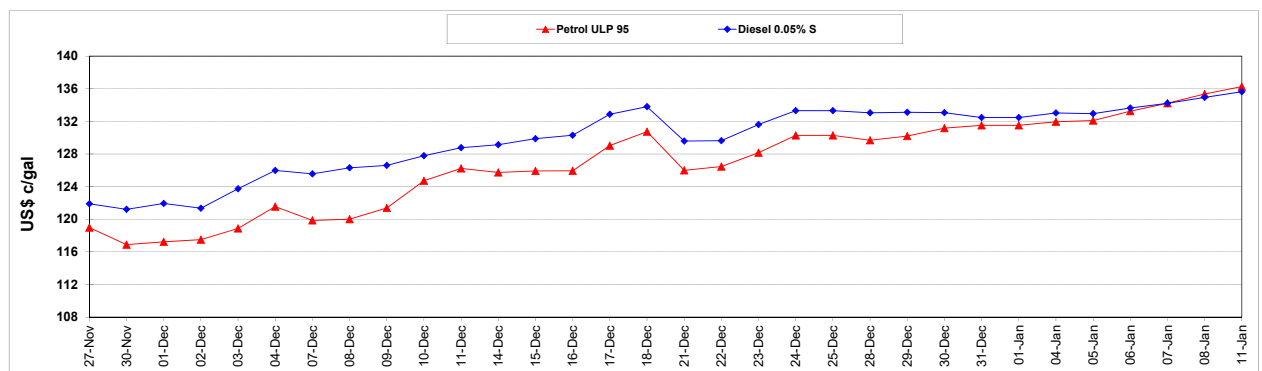
	PETROL 95	PETROL 93	DIESEL 0.05%	DIESEL 0.005%	ILL. PAR.
- MOVEMENT IN INTERNATIONAL PRODUCT PRICES	(69.619)	(71.584)	(54.410)	(54.703)	(57.082)
- MOVEMENT IN EXCHANGE RATE	(0.426)	(0.422)	(0.426)	(0.428)	(0.417)
AVERAGE UNIT OVER/(UNDER) RECOVERY 31/12/2020 - 11/01/2021	(70.045)	(72.006)	(54.836)	(55.131)	(57.499)

**R/\$ EXCHANGE RATE - (R/\$15.5025 - 11/01/2021)**

### EXCHANGE RATE USED IN BASIC FUEL PRICE



### INTERNATIONAL PRODUCT PRICES OF BASKET USED IN BASIC FUEL PRICE



### BASIC FUEL PRICE IN SA CENTS PER LITRE

